



MARICOPA COUNTY
Department of Transportation

MEMORANDUM

Date: January 8, 2014

To: MAG Specifications and Details Committee

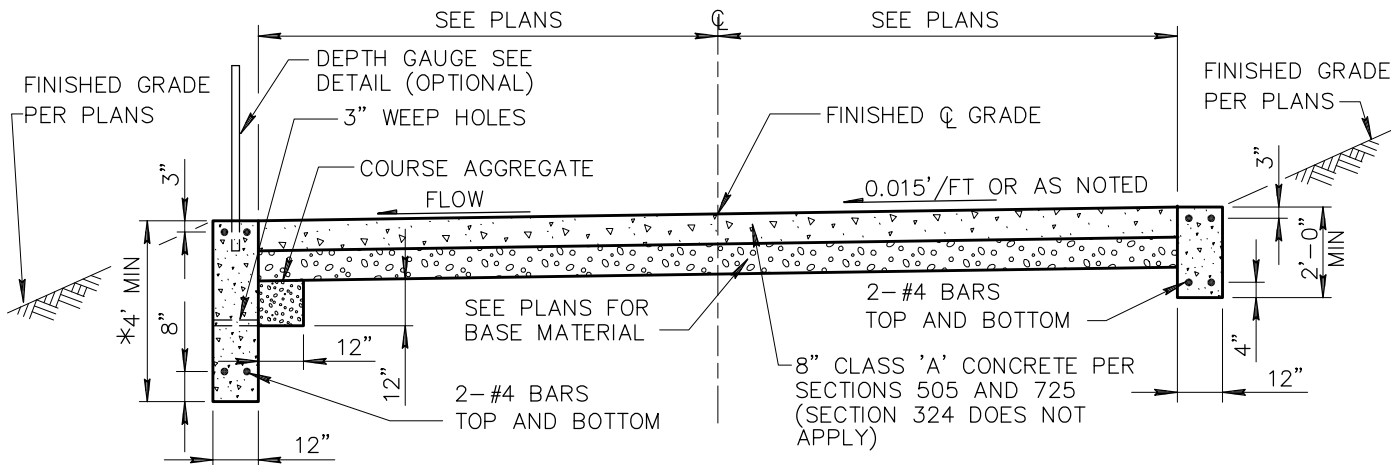
From: Robert Herz, MCDOT Representative

Subject: Revision to Detail 552 CONCRETE CUT-OFF WALLS **Case 14-04**

PURPOSE: To move cut-off walls away from roadway edge. Scour holes are hazards that form at the edge of cut-off walls. The hazard should not be located at the edge of the roadway but should be no closer than the edge of the roadway shoulder.

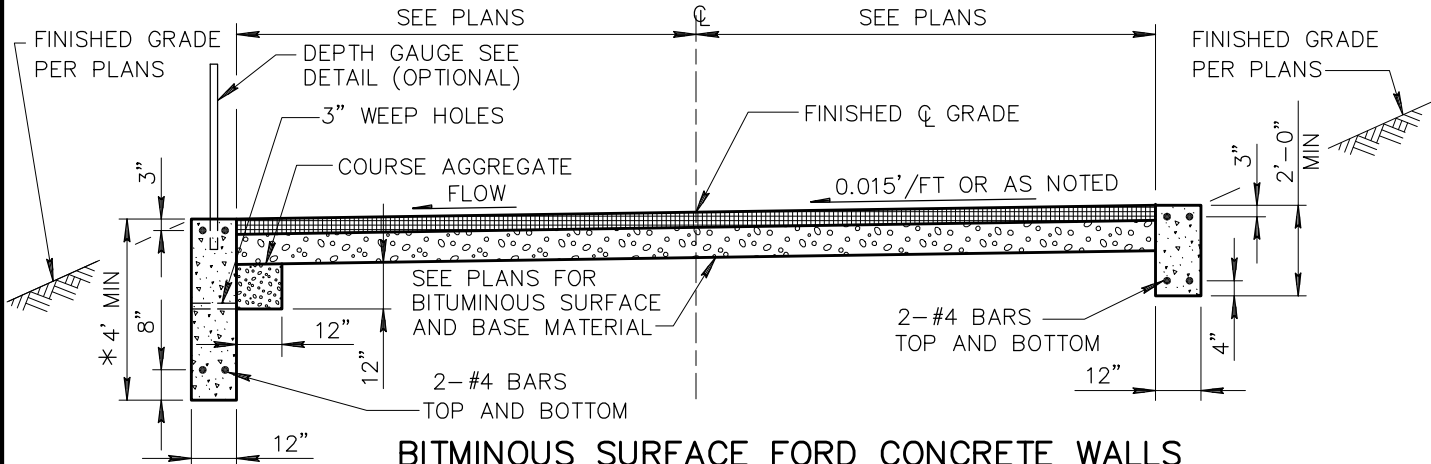
Other miscellaneous adjustments include the deletion of design related notes from the construction detail.

REVISION: See the attached marked up detail for revisions.



CONCRETE SURFACE FORD CONCRETE WALLS

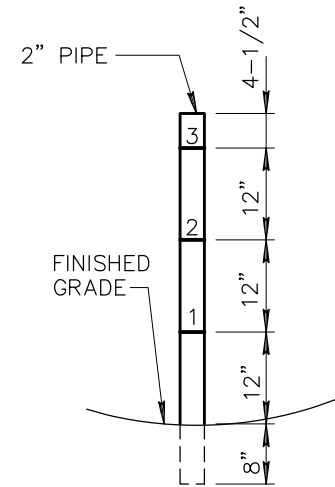
*MIN. DISTANCE BELOW STREAM BED



BITMINOUS SURFACE FORD CONCRETE WALLS

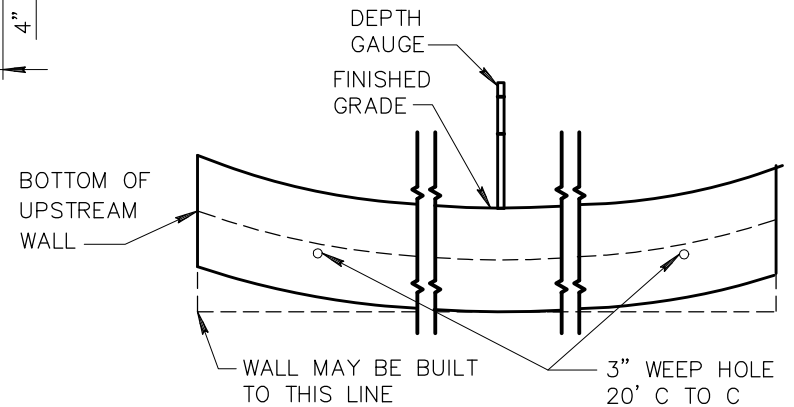
NOTES:

1. FORD WALLS SHALL BE CLASS 'A' CONCRETE PER SECT. 725.
2. DEPTH GAUGE SHALL BE PAINTED 2 COATS WHITE ENAMEL. NUMERALS AND MARKERS SHALL BE 1 COAT BLACK ENAMEL.
3. NUMBERS ON DEPTH GAUGE TO BE 2" HIGH.
4. HEIGHT OF DEPTH GAUGE PER PLANS.
5. REINFORCING BARS SHALL BE SET 3" CLEAR FROM SIDES OF CUT-OFF WALLS.
6. COURSE AGGREGATE AT WEEP HOLES SHALL BE ASTM C33 SIZE 57, ENCLOSED IN FILTER FABRIC (SECTION 796, CLASS B), AND EXTENDED Laterally A MINIMUM OF SIX-INCHES (6") ON EACH SIDE OF THE WEEP HOLE.



DEPTH GAUGE DETAIL

(OPTION OF THE CONTRACTING AGENCY)



ELEVATION LOOKING UPSTREAM

DETAIL NO.

552



STANDARD DETAIL
ENGLISH

FORD CROSSING AND CUT-OFF WALLS

REVISED

01-01-2015

DETAIL NO.

552